

# GEM

*Captivating display*



True to it's name... Walk into this state of the art display... All tempered glass construction including the access drawers, made to display your finest food items. LED lighting is standard.



**OSCARTEK®**

*Discover the Art of Display...*

512 South Airport Blvd., South San Francisco, CA 94080  
Tel: 855.885.2400 | 650.342.2400 | Fax: 650.342.7400  
sales@oscartek.com | www.oscartek.com





Project Name: \_\_\_\_\_  
Item #: \_\_\_\_\_ Quantity: \_\_\_\_\_



Photo shown cases side view with optional RAL color finish.  
Standard cases are unfinished front and stainless steel sides.



Visit our website for more finishing options and RAL colors  
[www.oscartek.com](http://www.oscartek.com)



Photo shown with drawer sliding out

# GEM DELI/PASTRY

**MODELS:** GEM DP900, GEM DP1300, GEM DP1500,  
GEM DP1700, GEM DP2100, GEM DPA90SQ

## STANDARD FEATURES

- Glass drawers
- Diffused LED light 3000°K
- Extra clear tempered glass
- Fully insulated stainless steel interior
- Galvanized chassis structure
- Case ship standard unfinished front with polished stainless steel sides

## OPTIONS

- Lift up top glass
- Narrow depth – 27 ¼”D
- Cold storage
- Customized color display plate (back painted glass)
- Remote condensing unit
- RAL color/laminate front and side panels
- Unfinished panels to accept custom millwork by others
- Heated pan for evaporator
- Casters

\*Oscartek reserves the right to change, modify, discontinue, or change any features, sizes, or capacity on any model without prior notice.

OSCARTEK®  
512 South Airport Blvd., South San Francisco, CA 94080  
Tel: 650.342.2400 | Fax: 650.342.7400  
[www.oscartek.com](http://www.oscartek.com)







Discover the Art of Display...

Project Name: \_\_\_\_\_

Item #: \_\_\_\_\_ Quantity: \_\_\_\_\_

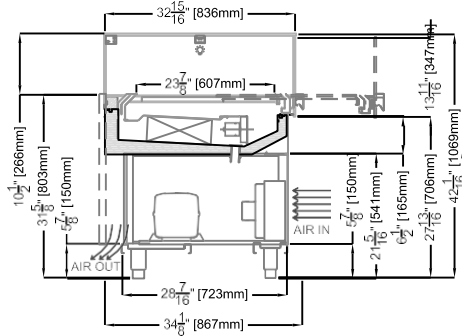
# GEM DELI/PASTRY

MODELS: GEM DP900, GEM DP1300, GEM DP1500, GEM DP1700, GEM DP2100, GEM DPA90SQ

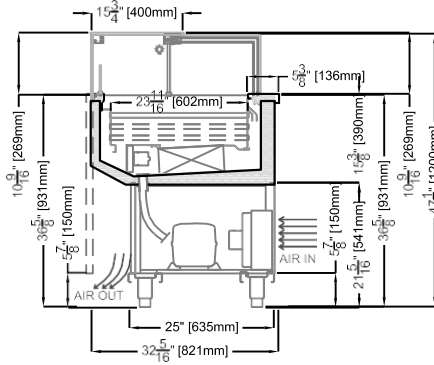
## SECTION VIEWS

### STANDARD

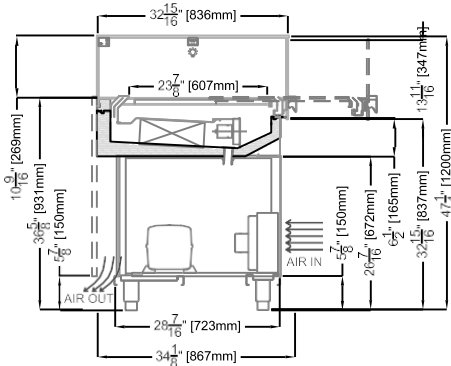
ALL MODELS EXCEPT FOR GEM DPA90SQ



GEM DPA90SQ

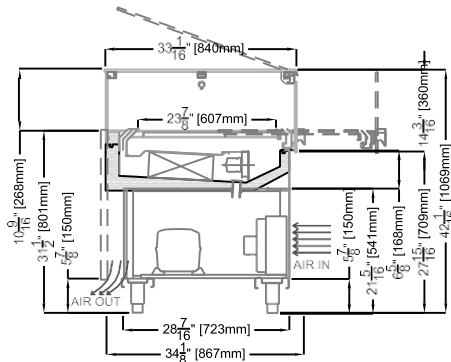


ALL MODELS TO MATCH WITH GEM DPA90SQ

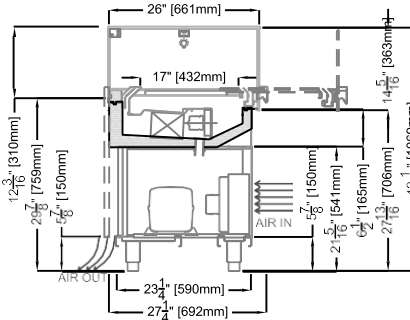


### OPTIONAL

GEM – LIFT UP TOP GLASS



GEM NARROW – 27 1/4"D



\*Oscartek reserves the right to change, modify, discontinue, or change any features, sizes, or capacity on any model without prior notice.

OSCARTEK®  
512 South Airport Blvd., South San Francisco, CA 94080  
Tel: 650.342.2400 | Fax: 650.342.7400  
www.oscartek.com





Project Name: \_\_\_\_\_  
 Item #: \_\_\_\_\_ Quantity: \_\_\_\_\_

## GEM DELI/PASTRY

MODELS: GEM DP900, GEM DP1300, GEM DP1500, GEM DP1700, GEM DP2100, GEM DPA90SQ

GEM DELI/PASTRY				
TECHNICAL FEATURES		MODELS		
		GEM DP900 (GEMDPDRW35R4)	GEM DP1300 (GEMDPDRW51R4)	GEM DP1500 (GEMDPDRW59R4)
External Dimensions (L-D-H) Inches-MM	Inches MM	*35 9/16" - 34 1/8" - 42 1/16" *903 - 867 - 1069	*51 5/16" - 34 1/8" - 42 1/16" *1303 - 867 - 1069	*59 3/16" - 34 1/8" - 42 1/16" *1503 - 867 - 1069
Crated Dimensions (L-D-H) Inches-MM	Inches MM	43" - 41" - 58" 1092- 1041 - 1473	59" - 41" - 58" 1500 - 1041 - 1473	67" - 41" - 58" 1700 - 1041 - 1473
Refrigeration	Type	Ventilated	Ventilated	Ventilated
Refrigeration Display Area	Type	Deck	Deck	Deck
Operating Temperature	°F	39°F	39°F	39°F
Compressor	Nr./Type	1 / Hermetic	1 / Hermetic	1 / Hermetic
BTU'S @ +14°F Evap Temperature	BTU's	1900	2700	3100
Electric Supply	(V/Ph/Hz)	115/1/60	115/1/60	115/1/60
Power Consumption	(W/A)	690/6.4	800/7.5	1000/9.2
Defrost	Mode/Type	Air	Air	Air
Climatic Class	°F/H.R.	75°F-55%RH	75°F-55%RH	75°F-55%RH
Refrigerant	Type	R404A / R452A	R404A / R452A	R404A / R452A
Pipe Size (Inches)	Suction, Liquid	3/8" Suction, 1/4" Liquid	1/2" Suction, 1/4" Liquid	1/2" Suction, 1/4" Liquid
Net Weights	Lb	230	280	330
Crated Weights	Lb	445	495	545
<b>*DIMENSIONS ARE WITH POLISHED S/S SIDES</b>				

\*Oscartek reserves the right to change, modify, discontinue, or change any features, sizes, or capacity on any model without prior notice.

OSCARTEK®  
 512 South Airport Blvd., South San Francisco, CA 94080  
 Tel: 650.342.2400 | Fax: 650.342.7400  
 www.oscartek.com





Discover the Art of Display...

Project Name: \_\_\_\_\_

Item #: \_\_\_\_\_ Quantity: \_\_\_\_\_

## GEM DELI/PASTRY

MODELS: GEM DP900, GEM DP1300, GEM DP1500, GEM DP1700, GEM DP2100, GEM DPA90SQ

GEM DELI/PASTRY				
TECHNICAL FEATURES		MODELS		
		GEM DP1700 (GEMDPDRW67R4)	GEM DP2100 (GEMDPDRW83R4)	GEM DPA90SQ (GEMDPR4AP9012)
External Dimensions (L-D-H) Inches-MM	Inches MM	*67 1/16" - 34 1/8" - 42 1/16" *1703 - 867 - 1069	*82 13/16" - 34 1/8" - 42 1/16" *2103 - 867 - 1069	*51 5/16" - 32 5/16" - 47 1/4" *1303 - 821 - 1200
Crated Dimensions (L-D-H) Inches-MM	Inches MM	73" - 41" - 58" 1854 - 1041 - 1473	88" - 41" - 58" 2235 - 1041 - 1473	58" - 58" - 58" 1397 - 1397 - 1397
Refrigeration	Type	Ventilated	Ventilated	Ventilated
Refrigeration Display Area	Type	Deck	Deck	Deck
Operating Temperature	°F	39°F	39°F	39°F
Compressor	Nr./Type	1 / Hermetic	1 / Hermetic	1 / Hermetic
BTU'S @ +14°F Evap Temperature	BTU's	3500	3800	3900
Electric Supply	(V/Ph/Hz)	115/1/60	115/1/60	115/1/60
Power Consumption	(W/A)	1100/10.4	1300/12.3	1150/10.9
Defrost	Mode/Type	Air	Air	Air
Climatic Class	°F/H.R.	75°F-55%RH	75°F-55%RH	75°F-55%RH
Refrigerant	Type	R404A / R452A	R404A / R452A	R404A / R452A
Pipe Size (Inches)	Suction, Liquid	5/8" Suction, 5/16" Liquid	5/8" Suction, 5/16" Liquid	1/2" Suction, 1/4" Liquid
Net Weights	Lb	340	380	410
Crated Weights	Lb	595	695	665

**\*DIMENSIONS ARE WITH POLISHED S/S SIDES**

\*Oscartek reserves the right to change, modify, discontinue, or change any features, sizes, or capacity on any model without prior notice.

OSCARTEK®  
512 South Airport Blvd., South San Francisco, CA 94080  
Tel: 650.342.2400 | Fax: 650.342.7400  
www.oscartek.com





Discover the Art of Display...

Project Name: \_\_\_\_\_  
Item #: \_\_\_\_\_ Quantity: \_\_\_\_\_

# GEM CHOCOLATE

**MODELS:** GEM C900, GEM C1300, GEM C1500, GEM C1700, GEM C2100, GEM CA90SQ

## STANDARD FEATURES

- Glass drawers
- Diffused LED light 3000°K
- Extra clear tempered glass
- Fully insulated stainless steel interior
- Galvanized chassis structure
- Humidity control
- Case ship standard unfinished front with polished stainless steel sides

## OPTIONS

- Lift up top glass
- Narrow depth – 27 ¼”D
- Cold storage
- Customized color display plate (back painted glass)
- Remote condensing unit
- RAL color/laminate front and side panels
- Unfinished panels to accept custom millwork by others
- Heated pan for evaporator
- Casters



Photo shown with optional white finish. Standard cases are unfinished front and stainless steel sides.



Visit our website for more finishing options and RAL colors  
[www.oscartek.com](http://www.oscartek.com)



Photo shown with drawer sliding out

*\*Oscartek reserves the right to change, modify, discontinue, or change any features, sizes, or capacity on any model without prior notice.*

OSCARTEK®  
512 South Airport Blvd., South San Francisco, CA 94080  
Tel: 650.342.2400 | Fax: 650.342.7400  
[www.oscartek.com](http://www.oscartek.com)







Discover the Art of Display...

Project Name: \_\_\_\_\_

Item #: \_\_\_\_\_ Quantity: \_\_\_\_\_

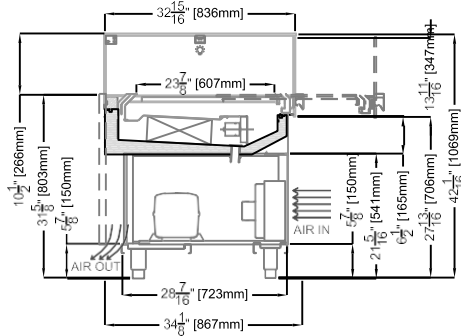
# GEM CHOCOLATE

MODELS: GEM C900, GEM C1300, GEM C1500, GEM C1700, GEM C2100, GEM CA90SQ

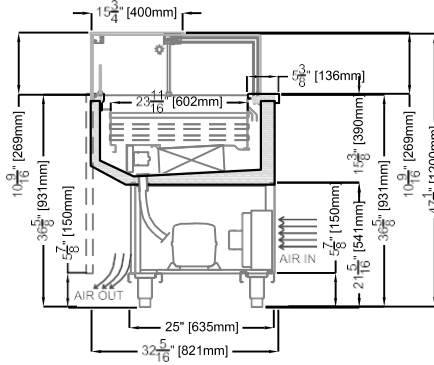
## SECTION VIEWS

### STANDARD

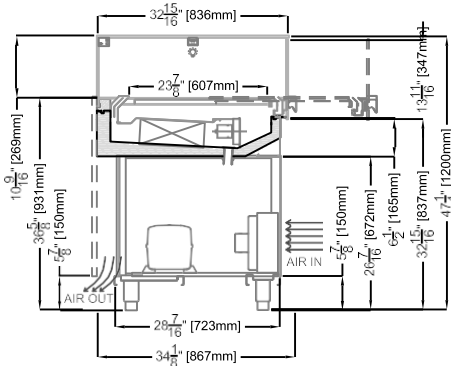
ALL MODELS EXCEPT FOR GEM CA90SQ



GEM CA90SQ

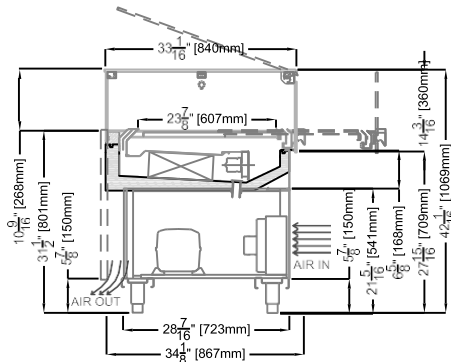


ALL MODELS TO MATCH WITH GEM CA90SQ

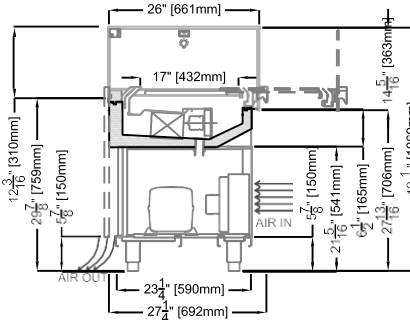


### OPTIONAL

GEM – LIFT UP TOP GLASS



GEM NARROW – 27 1/4”D



\*Oscartek reserves the right to change, modify, discontinue, or change any features, sizes, or capacity on any model without prior notice.

OSCARTEK®  
512 South Airport Blvd., South San Francisco, CA 94080  
Tel: 650.342.2400 | Fax: 650.342.7400  
www.oscartek.com





Discover the Art of Display...

Project Name: \_\_\_\_\_

Item #: \_\_\_\_\_ Quantity: \_\_\_\_\_

## GEM CHOCOLATE

MODELS: GEM C900, GEM C1300, GEM C1500, GEM C1700, GEM C2100, GEM CA90SQ

GEM CHOCOLATE				
TECHNICAL FEATURES		MODELS		
		GEM C900	GEM C1300	GEM C1500
External Dimensions (L-D-H) Inches-MM	Inches MM	*35 9/16" - 34 1/8" - 42 1/16" *903 - 867 - 1069	*51 5/16" - 34 1/8" - 42 1/16" *1303 - 867 - 1069	*59 3/16" - 34 1/8" - 42 1/16" *1503 - 867 - 1069
Crated Dimensions (L-D-H) Inches-MM	Inches MM	43" - 41" - 58" 1092- 1041 - 1473	59" - 41" - 58" 1500 - 1041 - 1473	67" - 41" - 58" 1700 - 1041 - 1473
Humidity Control	Type	35-70%	35-70%	35-70%
Refrigeration	Type	Ventilated	Ventilated	Ventilated
Refrigeration Display Area	Type	Deck	Deck	Deck
Operating Temperature	°F	57.2°F	57.2°F	57.2°F
Compressor	Nr./Type	1 / Hermetic	1 / Hermetic	1 / Hermetic
BTU'S @ +35°F Evap Temperature	BTU's	1900	2700	3100
Electric Supply	(V/Ph/Hz)	208-220/1/60	208-220/1/60	208-220/1/60
Power Consumption	(W/A)	690/6.4	800/7.5	1000/9.2
Defrost	Mode/Type	Air	Air	Air
Climatic Class	°F/H.R.	75°F-55%RH	75°F-55%RH	75°F-55%RH
Refrigerant Gas	Type	R404A / R452A	R404A / R452A	R404A / R452A
Pipe Size (Inches)	Suction, Liquid	3/8" Suction, 1/4" Liquid	1/2" Suction, 1/4" Liquid	1/2" Suction, 1/4" Liquid
Net Weights	Lb	230	280	330
Crated Weights	Lb	445	495	545
<b>*DIMENSIONS ARE WITH POLISHED S/S SIDES</b>				

\*Oscartek reserves the right to change, modify, discontinue, or change any features, sizes, or capacity on any model without prior notice.

OSCARTEK®  
512 South Airport Blvd., South San Francisco, CA 94080  
Tel: 650.342.2400 | Fax: 650.342.7400  
www.oscartek.com





Discover the Art of Display...

Project Name: \_\_\_\_\_

Item #: \_\_\_\_\_ Quantity: \_\_\_\_\_

## GEM CHOCOLATE

MODELS: GEM C900, GEM C1300, GEM C1500, GEM C1700, GEM C2100, GEM CA90SQ

GEM CHOCOLATE				
TECHNICAL FEATURES		MODELS		
		GEM C1700	GEM C2100	GEM CA90SQ
External Dimensions (L-D-H) Inches-MM	Inches MM	*67 1/16" - 34 1/8" - 42 1/16" *1703 - 867 - 1069	*82 13/16" - 34 1/8" - 42 1/16" *2103 - 867 - 1069	*51 5/16" - 32 5/16" - 47 1/4" *1303 - 821 - 1200
Crated Dimensions (L-D-H) Inches-MM	Inches MM	73" - 41" - 58" 1854 - 1041 - 1473	88" - 41" - 58" 2235 - 1041 - 1473	58" - 58" - 58" 1397 - 1397 - 1397
Humidity Control	Type	35-70%	35-70%	35-70%
Refrigeration	Type	Ventilated	Ventilated	Ventilated
Refrigeration Display Area	Type	Deck	Deck	Deck
Operating Temperature	°F	57.2°F	57.2°F	57.2°F
Compressor	Nr./Type	1 / Hermetic	1 / Hermetic	1 / Hermetic
BTU'S @ +35°F Evap Temperature	BTU's	3500	3800	3900
Electric Supply	(V/Ph/Hz)	208-220/1/60	208-220/1/60	208-220/1/60
Power Consumption	(W/A)	1100/10.4	1300/12.3	1150/10.9
Defrost	Mode/Type	Air	Air	Air
Climatic Class	°F/H.R.	75°F-55%RH	75°F-55%RH	75°F-55%RH
Refrigerant Gas	Type	R404A / R452A	R404A / R452A	R404A / R452A
Pipe Size (Inches)	Suction, Liquid	5/8" Suction, 5/16" Liquid	5/8" Suction, 5/16" Liquid	1/2" Suction, 1/4" Liquid
Net Weights	Lb	340	380	410
Crated Weights	Lb	595	695	665
<b>*DIMENSIONS ARE WITH POLISHED S/S SIDES</b>				

\*Oscartek reserves the right to change, modify, discontinue, or change any features, sizes, or capacity on any model without prior notice.

OSCARTEK®  
512 South Airport Blvd., South San Francisco, CA 94080  
Tel: 650.342.2400 | Fax: 650.342.7400  
www.oscartek.com





Discover the Art of Display...

Project Name: \_\_\_\_\_  
Item #: \_\_\_\_\_ Quantity: \_\_\_\_\_

# GEM NEUTRAL

**MODELS:** GEM N900, GEM N1300, GEM N1500, GEM N1700, GEM N2100, GEM NA90SQ

## STANDARD FEATURES

- Glass drawers
- Diffused LED light 3000°K
- Extra clear tempered glass
- Fully insulated stainless steel interior
- Galvanized chassis structure
- Case ship standard unfinished front with polished stainless steel sides

## OPTIONS

- Lift up top glass
- Narrow depth – 27 1/4" D
- Cold storage
- Customized color display plate (back painted glass)
- RAL color/laminate front and side panels
- Unfinished panels to accept custom millwork by others
- Casters



Photo shown with optional custom front finishes. Standard cases are unfinished front and stainless steel sides.



Visit our website for more finishing options and RAL colors  
[www.oscartek.com](http://www.oscartek.com)



Photo shown with drawer sliding out

\*Oscartek reserves the right to change, modify, discontinue, or change any features, sizes, or capacity on any model without prior notice.

OSCARTEK®  
512 South Airport Blvd., South San Francisco, CA 94080  
Tel: 650.342.2400 | Fax: 650.342.7400  
[www.oscartek.com](http://www.oscartek.com)

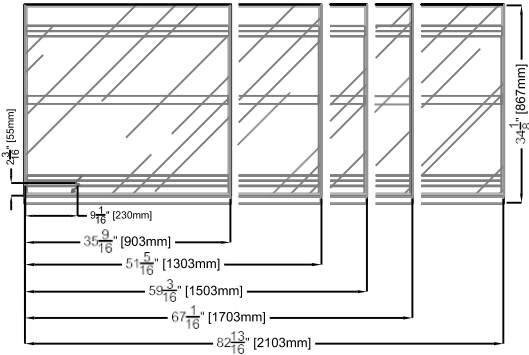


# GEM NEUTRAL

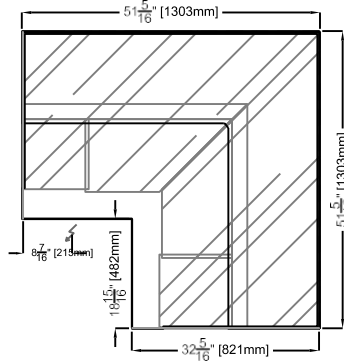
MODELS: GEM N900, GEM N1300, GEM N1500, GEM N1700, GEM N2100, GEM NA90SQ

## PLAN VIEWS

**GEM NEUTRAL LINEAR MODELS**

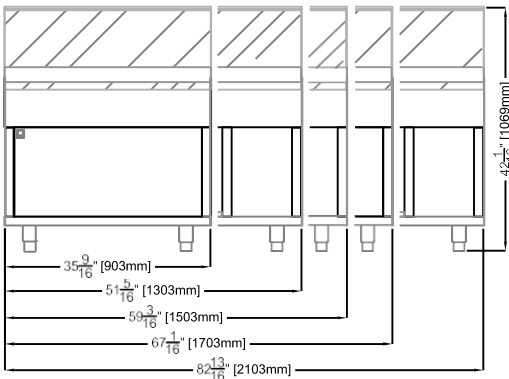


**GEM NA90SQ**

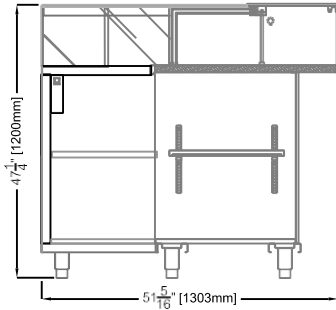


## REAR ELEVATIONS (OPERATOR SIDE)

**GEM NEUTRAL LINEAR MODELS**



**GEM NA90SQ**



### ELECTRICAL LEGEND

	POWER
---	-------

\*Oscartek reserves the right to change, modify, discontinue, or change any features, sizes, or capacity on any model without prior notice.

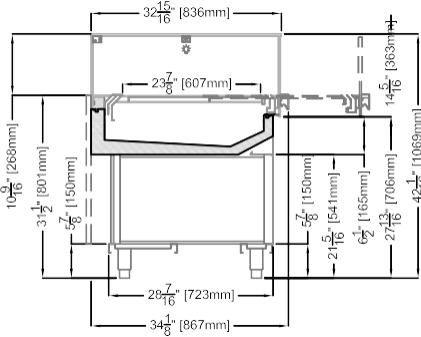
# GEM NEUTRAL

MODELS: GEM N900, GEM N1300, GEM N1500, GEM N1700, GEM N2100, GEM NA90SQ

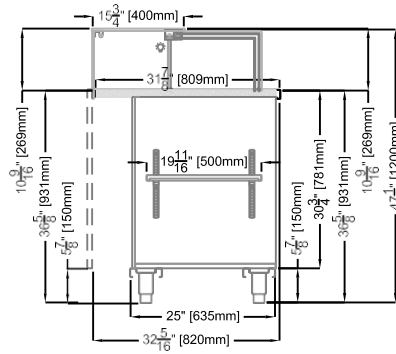
## SECTION VIEWS

### STANDARD

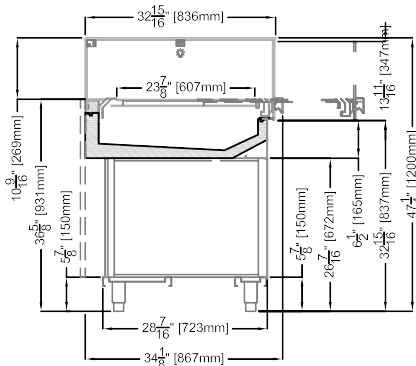
ALL MODES EXCEPT FOR GEM NA90SQ



GEM NA90SQ

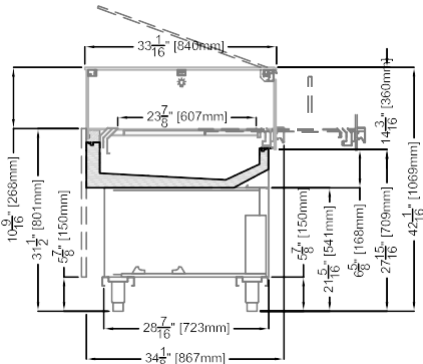


ALL MODELS TO MATCH GEM NA90SQ

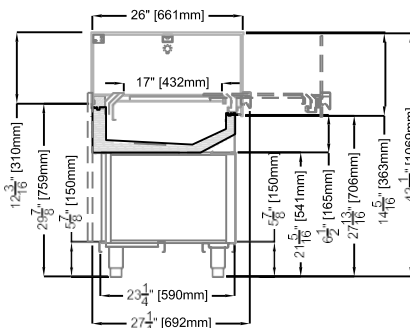


### OPTIONAL

GEM – LIFT UP TOP GLASS



GEM NARROW – 27 1/4\"/>



\*Oscartek reserves the right to change, modify, discontinue, or change any features, sizes, or capacity on any model without prior notice.



Discover the Art of Display...

Project Name: \_\_\_\_\_

Item #: \_\_\_\_\_ Quantity: \_\_\_\_\_

## GEM NEUTRAL

MODELS: GEM N900, GEM N1300, GEM N1500, GEM N1700, GEM N2100, GEM NA90SQ

GEM NEUTRAL				
TECHNICAL FEATURES		MODELS		
		GEM N900 (GEMNDRW35R4)	GEM N1300 (GEMNDRW51R4)	GEM N1500 (GEMNDRW59R4)
External Dimensions (L-D-H) Inches-MM	Inches MM	*35 9/16" - 34 1/8" - 42 1/16" *903 - 867 - 1069	*51 5/16" - 34 1/8" - 42 1/16" *1303 - 867 - 1069	*59 3/16" - 34 1/8" - 42 1/16" *1503 - 867 - 1069
Crated Dimensions (L-D-H) Inches-MM	Inches MM	43" - 41" - 58" 1092- 1041 - 1473	59" - 41" - 58" 1500 - 1041 - 1473	67" - 41" - 58" 1700 - 1041 - 1473
Operating Temperature	°F	Ambient	Ambient	Ambient
Electric Supply	(V/Ph/Hz)	115/1/60	115/1/60	115/1/60
Power Consumption	(W/A)	30/0.3	50/0.5	50/0.5
Net Weights	Kg/Lb	190	210	260
Crated Weights	Kg/Lb	281	378	410
<b>*DIMENSIONS ARE WITH POLISHED S/S SIDES</b>				

GEM NEUTRAL				
TECHNICAL FEATURES		MODELS		
		GEM N1700 (GEMNDRW67R4)	GEM N2100 (GEMNDRW83R4)	GEM NA90SQ (GEMNR4AP9012)
External Dimensions (L-D-H) Inches-MM	Inches MM	*67 1/16" - 34 1/8" - 42 1/16" *1703 - 867 - 1069	*82 13/16" - 34 1/8" - 42 1/16" *2103 - 867 - 1069	*51 5/16" - 32 5/16" - 47 1/4" *1303 - 821 - 1200
Crated Dimensions (L-D-H) Inches-MM	Inches MM	73" - 41" - 58" 1854 - 1041 - 1473	88" - 41" - 58" 2235 - 1041 - 1473	58" - 58" - 58" 1397 - 1397 - 1397
Operating Temperature	°F	Ambient	Ambient	Ambient
Electric Supply	(V/Ph/Hz)	115/1/60	115/1/60	115/1/60
Power Consumption	(W/A)	60/0.6	60/0.6	50/0.5
Net Weights	Kg/Lb	290	330	210
Crated Weights	Kg/Lb	435	450	378
<b>*DIMENSIONS ARE WITH POLISHED S/S SIDES</b>				

\*Oscartek reserves the right to change, modify, discontinue, or change any features, sizes, or capacity on any model without prior notice.

OSCARTEK®  
512 South Airport Blvd., South San Francisco, CA 94080  
Tel: 650.342.2400 | Fax: 650.342.7400  
www.oscartek.com





Discover the Art of Display...

Project Name: \_\_\_\_\_

Item #: \_\_\_\_\_ Quantity: \_\_\_\_\_

# GEM GRAB AND GO

**MODELS:** GEM GNG900, GEM GNG1000, GEM GNG1300, GEM GNG1500, GEM GNG1700, GEM GNG2000, GEM GNG2100, GEM GNG2600, GEM GNG3000, GEM GNGA90SQ, GEM GNGA90C

## STANDARD FEATURES

- Fully insulated stainless steel interior
- Galvanized chassis structure
- Case ship standard unfinished front with polished stainless steel sides

## OPTIONS

- Narrow depth – 27 ¼”D
- Cold storage
- Work top and perimeter (brushed s/s, corian, granite)
- Remote condensing unit
- RAL color/laminate front and side panels
- Unfinished panels to accept custom millwork by others
- Heated pan for evaporator
- Casters



Photo shown with optional RAL color finish. Standard cases are unfinished front and stainless steel sides.



Visit our website for more finishing options and RAL colors  
[www.oscartek.com](http://www.oscartek.com)



Photo shown with optional finish. Standard cases are unfinished front and stainless steel sides.

*\*Oscartek reserves the right to change, modify, discontinue, or change any features, sizes, or capacity on any model without prior notice.*

OSCARTEK®  
512 South Airport Blvd., South San Francisco, CA 94080  
Tel: 650.342.2400 | Fax: 650.342.7400  
[www.oscartek.com](http://www.oscartek.com)

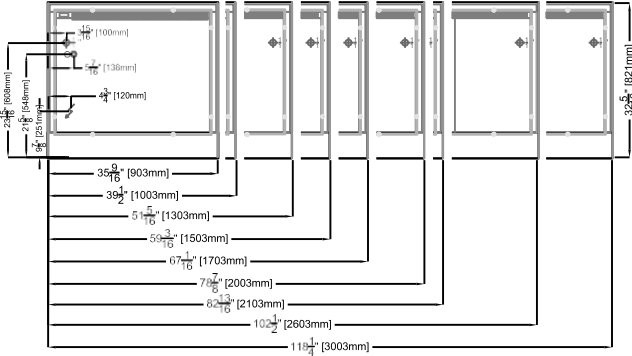


## GEM GRAB AND GO

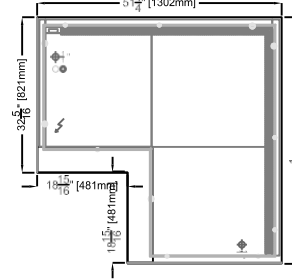
**MODELS:** GEM GNG900, GEM GNG1000, GEM GNG1300, GEM GNG1500, GEM GNG1700, GEM GNG2000, GEM GNG2100, GEM GNG2600, GEM GNG3000, GEM GNGA90SQ, GEM GNGA90C

### PLAN VIEWS

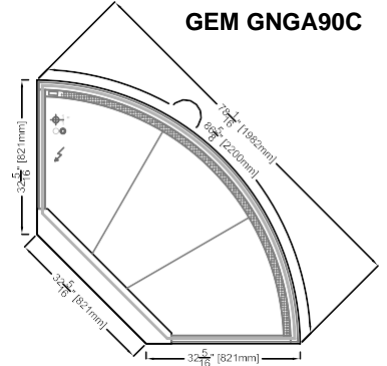
**GEM GRAB AND GO LINEAR MODELS**



**GEM GNGA90SQ**

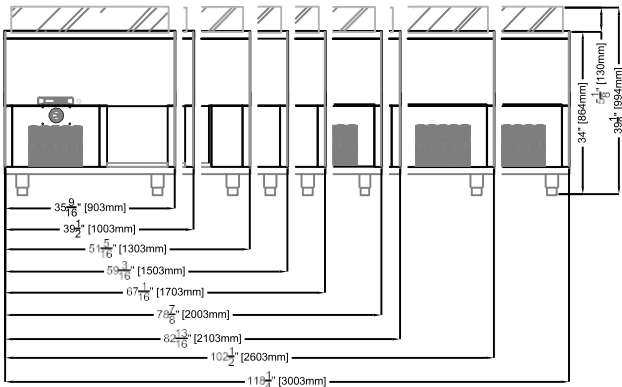


**GEM GNGA90C**

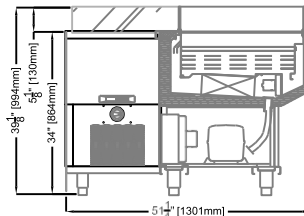


### REAR ELEVATIONS (OPERATOR SIDE)

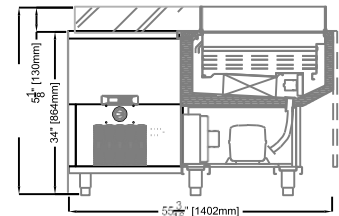
**GEM GRAB AND GO LINEAR MODELS**



**GEM GNGA90SQ**



**GEM GNGA90C**



#### ELECTRICAL LEGEND

∞	REFRIGERATION LINES
⊕ 1"	DRAIN
⚡	POWER

\*Oscartek reserves the right to change, modify, discontinue, or change any features, sizes, or capacity on any model without prior notice.

OSCARTEK®  
512 South Airport Blvd., South San Francisco, CA 94080  
Tel: 650.342.2400 | Fax: 650.342.7400  
www.oscartek.com





Discover the Art of Display...

Project Name: \_\_\_\_\_

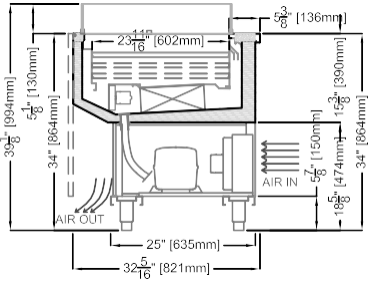
Item #: \_\_\_\_\_ Quantity: \_\_\_\_\_

## GEM GRAB AND GO

**MODELS:** GEM GNG900, GEM GNG1000, GEM GNG1300, GEM GNG1500, GEM GNG1700, GEM GNG2000, GEM GNG2100, GEM GNG2600, GEM GNG3000, GEM GNGA90SQ, GEM GNGA90C

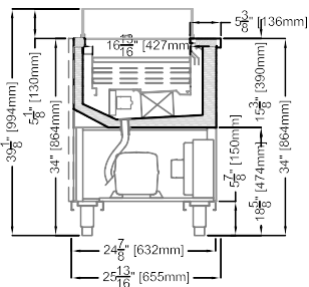
### SECTION VIEWS

#### STANDARD

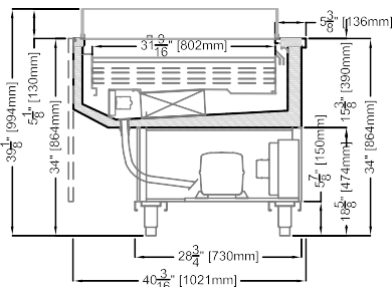


#### OPTIONAL

##### GEM NARROW



##### GEM PRO



\*Oscartek reserves the right to change, modify, discontinue, or change any features, sizes, or capacity on any model without prior notice.

OSCARTEK®  
512 South Airport Blvd., South San Francisco, CA 94080  
Tel: 650.342.2400 | Fax: 650.342.7400  
www.oscartek.com





Project Name: \_\_\_\_\_  
 Item #: \_\_\_\_\_ Quantity: \_\_\_\_\_

## GEM GRAB AND GO

MODELS: GEM GNG900, GEM GNG1000, GEM GNG1300, GEM GNG1500, GEM GNG1700, GEM GNG2000, GEM GNG2100, GEM GNG2600, GEM GNG3000, GEM GNGA90SQ, GEM GNGA90C

GEM GRAB AND GO						
TECHNICAL FEATURES		MODELS				
		GEM GNG900	GEM GNG1000	GEM GNG1300	GEM GNG1500	GEM GNG1700
External Dimensions (L-D-H) Inches-MM	Inches MM	*35 9/16" - 32 5/16" - 34" *903 - 821 - 864	*39 1/2" - 32 5/16" - 34" *1003 - 821 - 864	*51 5/16" - 32 5/16" - 34" *1303 - 821 - 864	*59 3/16" - 32 5/16" - 34" *1503 - 821 - 864	*67 1/16" - 32 5/16" - 34" *1703 - 821 - 864
Crated Dimensions (L-D-H) Inches-MM	Inches MM	41" - 39 3/8" - 40" 1041 - 1000 - 1016	45" - 39 3/8" - 40" 1150 - 1000 - 1016	59" - 39 3/8" - 40" 1500 - 1000 - 1016	67" - 39 3/8" - 40" 1700 - 1000 - 1016	74 3/4" - 39 3/8" - 40" 1900 - 1000 - 1016
Refrigeration	Type	Ventilated	Ventilated	Ventilated	Ventilated	Ventilated
Refrigeration Display Area	Type	Deck	Deck	Deck	Deck	Deck
Operating Temperature	°F	40°F	40°F	40°F	40°F	40°F
Compressor	Nr./Type	1 / Hermetic	1 / Hermetic	1 / Hermetic	1 / Hermetic	1 / Hermetic
BTU'S @ +14°F Evap Temperature	BTU's	1500	1700	2200	2600	2900
Electric Supply	(V/Ph/Hz)	208-220/1/60	208-220/1/60	208-220/1/60	208-220/1/60	208-220/1/60
Power Consumption	(W/A)	550/5.2	550/5.2	650/5.9	710/6.7	850/8.1
Defrost	Mode/Type	Air	Air	Air	Air	Air
Climatic Class	°F/H.R.	75°F-55%RH	75°F-55%RH	75°F-55%RH	75°F-55%RH	75°F-55%RH
Refrigerant Gas	Type	R404A / R452A	R404A / R452A	R404A / R452A	R404A / R452A	R404A / R452A
Pipe Size (Inches)	Suction, Liquid	3/8" Suction, 1/4" Liquid	3/8" Suction, 1/4" Liquid	3/8" Suction, 1/4" Liquid	3/8" Suction, 1/4" Liquid	1/2" Suction, 1/4" Liquid
Net Weights	Lb	210	220	265	285	310
Crated Weights	Lb	378	388	415	430	438

\*DIMENSIONS ARE WITH POLISHED S/S SIDES

GEM GRAB AND GO							
TECHNICAL FEATURES		MODELS					
		GEM GNG2000	GEM GNG2100	GEM GNG2600	GEM GNG3000	GEM GNGA90SQ	GEM GNGA90C
External Dimensions (L-D-H) Inches-MM	Inches MM	*78 7/8" - 32 5/16" - 34" *2003 - 821 - 864	*82 13/16" - 32 5/16" - 34" *2103 - 821 - 864	*102 1/2" - 32 5/16" - 34" *2603 - 821 - 864	*118 1/4" - 32 5/16" - 34" *3003 - 821 - 864	*51 1/4" - 51 1/4" - 34" *1303 - 1303 - 864	*78 1/16" - 32 5/16" - 47 1/4" *1982 - 821 - 1200
Crated Dimensions (L-D-H) Inches-MM	Inches MM	84" - 39 3/8" - 40" 2150 - 1000 - 1016	89" - 39 3/8" - 40" 2260 - 1000 - 1016	109" - 39 3/8" - 40" 2768 - 1000 - 1016	125" - 39 3/8" - 40" 3175 - 1000 - 1016	58" - 58" - 40" 1397 - 1397 - 1016	87" - 40 1/2" - 55 1/4" 2209 - 1030 - 1400
Refrigeration	Type	Ventilated	Ventilated	Ventilated	Ventilated	Ventilated	Fan Ventilated
Refrigeration Display Area	Type	Deck	Deck	Deck	Deck	Deck	Deck
Operating Temperature	°F	40°F	40°F	40°F	40°F	40°F	39°F
Compressor	Nr./Type	1 / Hermetic	1 / Hermetic	1 / Hermetic	1 / Hermetic	1 / Hermetic	1 / Hermetic
BTU'S @ +14°F Evap Temperature	BTU's	3300	3700	4200	5000	3900	4200
Electric Supply	(V/Ph/Hz)	208-220/1/60	208-220/1/60	208-220/1/60	208-220/1/60	208-220/1/60	208-220/1/60
Power Consumption	(W/A)	890/8.3	1150/10.9	1250/11.7	1450/13.9	1150/10.9	1150/10.9
Defrost	Mode/Type	Air	Air	Air	Air	Air	Air
Climatic Class	°F/H.R.	75°F-55%RH	75°F-55%RH	75°F-55%RH	75°F-55%RH	75°F-55%RH	75°F-55%RH
Refrigerant Gas	Type	R404A / R452A	R404A / R452A	R404A / R452A	R404A / R452A	R404A / R452A	R404A / R452A
Pipe Size (Inches)	Suction, Liquid	1/2" Suction, 1/4" Liquid	1/2" Suction, 1/4" Liquid	5/8" Suction, 5/16" Liquid	5/8" Suction, 5/16" Liquid	1/2" Suction, 1/4" Liquid	1/2" Suction, 1/4" Liquid
Net Weights	Lb	330	350	440	490	410	350
Crated Weights	Lb	450	535	670	760	665	535

\*DIMENSIONS ARE WITH POLISHED S/S SIDES

\*Oscartek reserves the right to change, modify, discontinue, or change any features, sizes, or capacity on any model without prior notice.

OSCARTEK®  
 512 South Airport Blvd., South San Francisco, CA 94080  
 Tel: 650.342.2400 | Fax: 650.342.7400  
 www.oscartek.com

