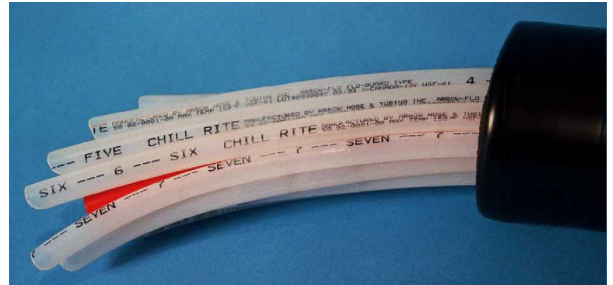
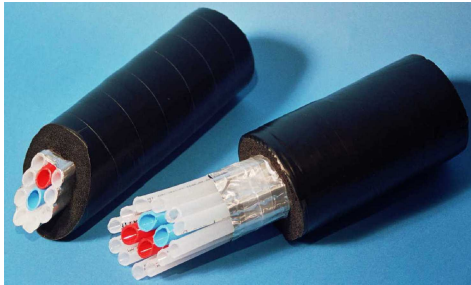


GUARDIAN TRUNK HOUSING

PROJECT _____

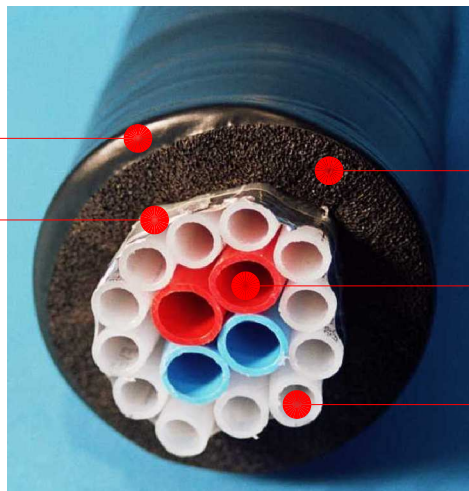
ITEM # _____

GUARDIAN REFRIGERATED TRUNK LINES BUILT TO YOUR EXACT SPECIFICATIONS



CHILL·RITE IS A PREMIUM QUALITY SUPPLIER
OF REFRIGERATED BEER TRUNK LINE.

PVC VAPOR BARRIER
DUAL WRAPPED 5MIL
ALUMINUM TAPE



MINIMUM $\frac{3}{4}$ " CLOSED
CELL INSULATION

$\frac{1}{2}$ " I.D. COOLANT LINES

$\frac{3}{8}$ " I.D. PRODUCT LINES

OUR AUTOMATED PROCESS ALLOWS US TO CONSISTENTLY BUILD THE TRUNK LINES TO OUR CUSTOMER'S EXACT SPECIFICATIONS. THIS INCLUDES $\frac{1}{2}$ " OR $\frac{3}{8}$ " GLYCOL LINES THAT ARE COLOR CODED AND NUMBERED PRODUCT LINES FOR EASY IDENTIFICATION.

CUSTOMERS ALWAYS GET EXCEPTIONAL VALUE FROM CHILL·RITE BECAUSE OUR PRODUCT IS MANUFACTURED WITH ONLY THE BEST MATERIALS. WE STRIVE TO BE OUR CUSTOMER'S BEST SUPPLIER BY LISTENING TO THEM. CUSTOMERS ASKED FOR NO-MINIMUM ORDER REQUIREMENTS, CUSTOM BRANCHING, PRIVATE LABELING, SHORT LEAD TIMES, AND COMPETITIVE PRICING...
AND, WE GIVE THEM THESE CHOICES.

2371 GAUSE BLVD. WEST
SLIDELL, LA 70460
P.O. BOX 5566 - ZIP 70469



www.CHILLRITE32.com
800.256.2190 - TOLL FREE
985.641.0183 - FAX

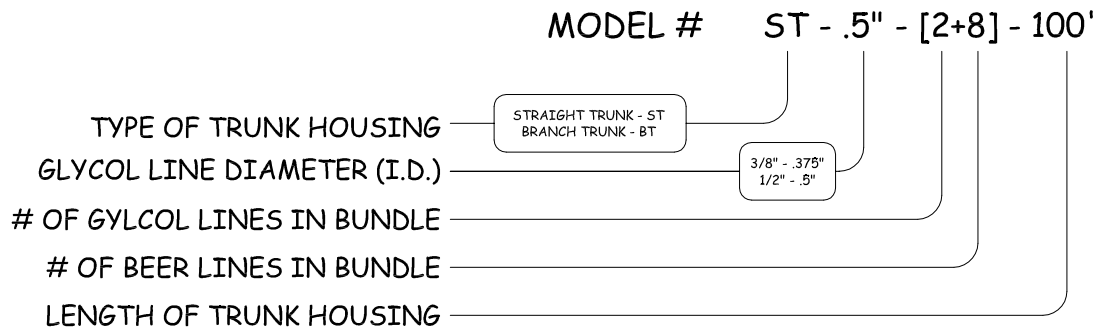
IN GOD WE TRUST

GUARDIAN TRUNK HOUSING SPECIFICATIONS & SIZES

PROJECT _____

ITEM # _____

TRUNK - HOUSING NOMENCLATURE:



CONSTRUCTION:

CHILL-RITE'S "GUARDIAN" BARRIER TUBING PROVIDES A LOW COEFFICIENT OF FRICTION AND A GLASS SMOOTH INNER CORE. RESISTS BEERSTONE BUILD-UP AND FUNGUS. CERTIFIED UNDER STANDARD NSF-51. CLUSTERS ARE DOUBLE WRAPPED IN 5 MIL ALUMINUM FOIL TAPE AND LINE CONFIGURATIONS ARE HELD TO EXACT TOLERANCES. FOR BUNDLES 12 LINES AND LARGER, AN ADDITIONAL POLYETHYLENE FILM TAPE IS APPLIED TO THE OUTSIDE OF THE FOILED BUNDLE TO HELP HOLD THE LINE CONFIGURATION FOR DIFFICULT INSTALL CONDITIONS. 3/4" HIGH QUALITY CLOSED CELL INSULATION FOR MAXIMUM R-VALUE. A PVC WRAP IS THEN APPLIED AS A VAPOR BARRIER OR JACKET ON THE OUTSIDE OF THE TRUNK HOUSING. FACTORY BRANCHING AND LACING KITS ARE AVAILABLE UPON REQUEST.
6" ELECTRICAL LONG SWEEP CHASES ARE REQUIRED WITH 18" MINIMUM RADIUS.

FLAME SPREAD & SMOKE RATINGS:

TO MEET MOST BUILDING CODES THIS MATERIAL MUST HAVE A FLAMESPREAD RATING OF 25 OR LESS AND A SMOKE DEVELOPED RATING OF 50 OR LESS AS MEASURED BY THE ASTM E-84 TEST. MEETS NFPA90A REQUIREMENTS.
TEMPERATURE OF 250° F WITHOUT SMOKING.

THE ASTM E-84 TUNNEL TEST IS A MEASURE OF THE RELATIVE BURNING BEHAVIOR OF BUILDING MATERIALS ACCOMPLISHED BY OBSERVING THE FLAME BEHAVIOR OF THE SPECIMEN WHILE QUANTIFYING THE SMOKE DEVELOPED. THE RESULTS FROM THIS TEST ARE NORMALLY REPORTED USING TWO NUMBERS, THE FIRST DESCRIBING THE RELATIVE FLAME-SPREAD AND THE SECOND THE SMOKE DEVELOPED RATING. A MATERIAL WITH A RELATIVE FLAME-SPREAD OF 25 AND A SMOKE DEVELOPED RATING OF 50 IS REFERRED TO AS A 25/50 RATED MATERIAL. THE CLOSED CELL INSULATION ON THE OUTSIDE OF THE BUNDLE IS RATED 25/50 .

LINES ARE PLENUM RATED

2371 GAUSE BLVD. WEST
SLIDELL, LA 70460
P.O. BOX 5566 - ZIP 70469



www.CHILLRITE32.com
800.256.2190 - TOLL FREE
985.641.0183 - FAX

IN GOD WE TRUST



Trunk Housing Specifications

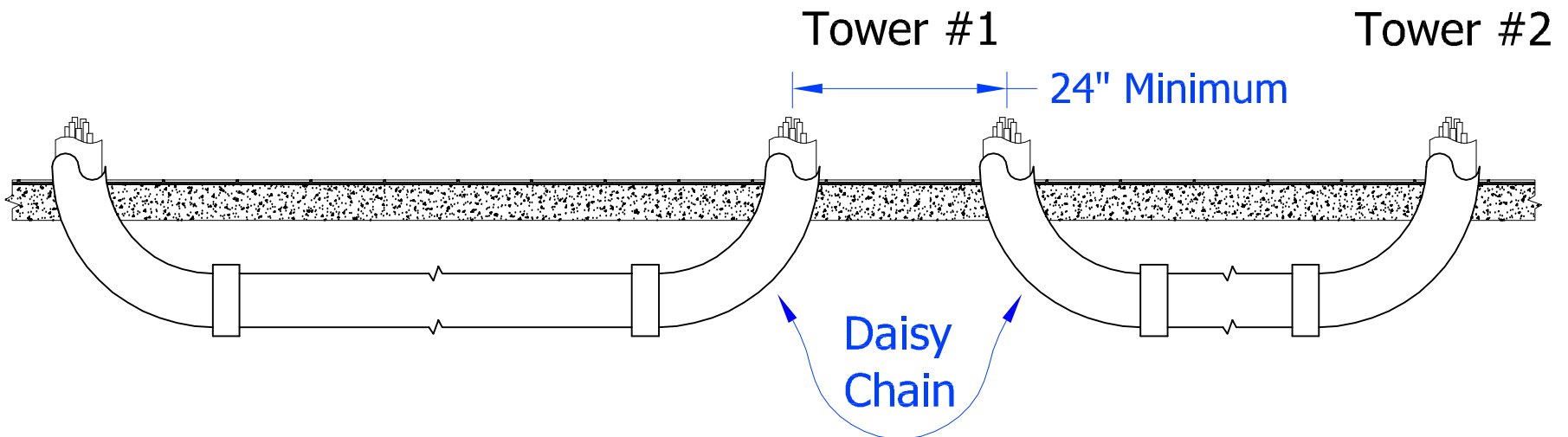
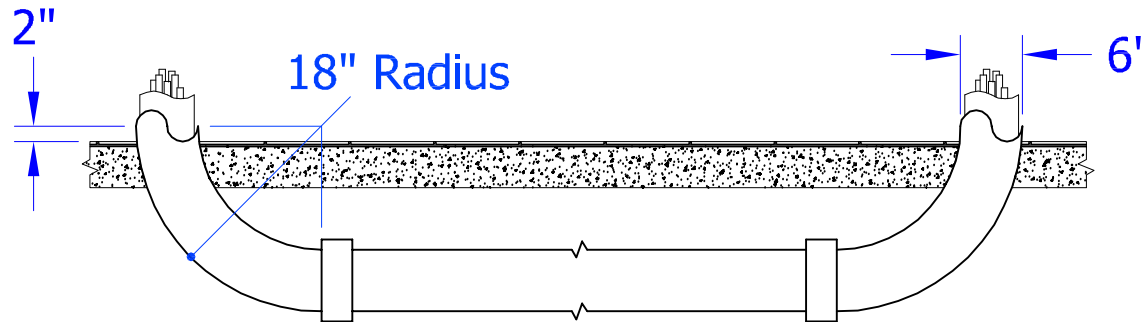


Glycol	+	Beer	Glycol Size (I.D.)	Trunk Diameter (O.D.)	Chase Size	
2	+	2	.500"	2.875"	6" Chase	
2	+	3	.500"	3.125"		
2	+	4	.500"	3.125"		
2	+	5	.500"	3.375"		
2	+	6	.500"	3.375"		
2	+	7	.500"	3.375"		
2	+	8	.500"	3.625"		
2	+	9	.500"	3.625"		
4	+	6	.500"	3.375"		
4	+	8	.500"	3.625"		
4	+	10	.500"	3.875"		
4	+	12	.500"	4.125"		1 Turn = 6" Chase
4	+	14	.500"	4.250"		More than one turn = 8" Chase
4	+	16	.500"	4.375"		
2	+	0	.500"	2.375"	4" Chase if needed	

CHILL-RITE 32 Mfg. P.O. Box 5566 Slidell, LA 70469
 800-256-2190 (985) 641-4865 FAX: (985) 641-0183
www.chillrite32.com

Specification Sheet for Underground Chases

◆ Use 6" PVC Long Electrical 90° Sweeps ◆



Chill Rite 32 Manufacturing
P.O. Box 5566
Slidell, LA 70469
985.641.4865
FAX: 985.641.0183
www.chillrite32.com

ELECTRICAL PIPE = GREY
PLUMBING PVC = WHITE

◆ ALL STUB UPS SHOULD BE GREY IN COLOR ◆