

Great for Large Banquets,
Nursing Homes, Convention
Centers, wherever mass feeding
is required.

GATES MFCX2 MASS FEED CONVEYOR

*NOTE: Model specifications are subject to change
without notice.*

Conveyor shall be Gates Mass Feeding Series Model #SMFCX2 and will carry U.L. Listed and NSF approved plate.

SIZE:

8' - 6" x 4' - 7" x 3' - 0" High

BELT:

Shall be fabric type Hycar Buna N rubber over woven synthetic carcass. FDA and NSF approved. Belt joint machine set stainless steel lacing with nylon lock rod.

BELT SPEED:

Shall be electronically adjustable in speed range from approximately 0 to 40 FPM.

CONVEYOR TOP:

Shall be formed of stainless steel with straight turndown on all sides. Belt will terminate at drive end just ahead of limit switch hereinafter specified.

PYLONS AND APRONS:

Shall be constructed of stainless steel with removable panels for access to internal components. 6" high stainless steel adjustable feet.

DRIVE:

Conveyor shall be driven by totally enclosed fan cooled D.C. permanent magnet motor through worm gear speed reducer connected to power drive sprocket by roller chain and sprockets all located in pylon. Motor controlled with SCR power transmission group. SCR main control panel has speed control station with stop-start control. SCR system will include dynamic braking. All controls shall be NEMA 4 watertight. Shafting shall be solid stainless steel with crowned rollers to assure proper tracking.

Control package shall include motor starter, disconnect, pilot duty limit switches as required. Start-stop control to be located in convenient

area. Bearings shall be self-aligning ball bearings sealed for life.

MANUAL CLEANING SYSTEM:

Head section fitted with stainless steel slide out crumb collector pan. Conveyor can be hand cleaned with damp sponge and brush.

LIMIT SWITCH:

Shall be full width of belt pan type interwired to motor and controls. Conveyor will stop as tray reaches check point and will automatically restart when tray is removed.

RECEPTACLES AND PANEL BOX:

Panel box is watertight NEMA 3R construction located in pylon at starters end. Four 20 amp duplex outlets located in pylons in center area under conveyor. Six duplex outlets total. All receptacles will be wired on individual circuits to panel box.

HOT FOOD WELLS:

Three 12" x 20" dry-moist hot food wells with infinite controls, indicator lights, and master switch wired to panel box on each side of conveyor. Six wells total.

MECHANICAL DATA:

Six (6) 1200 watt hot food wells with infinite controls; Six (6) 120 volt receptacles; 1/2 H.P. Conveyor drive with on/off switch; entire unit wired to panel box. Ready for one conduit connection to power supply by others. Total load: 20.52 KW, 57.0 amps, 120-208/60/3.

OPTIONS:

- Cold Food Pans or Frost Tops.
- Drains in Hot Food Wells.
- 5" diameter Casters in lieu of Legs.
- Cord set with appropriate size Plug.
- Matching Receptacles.

Shipped knocked down when possible.

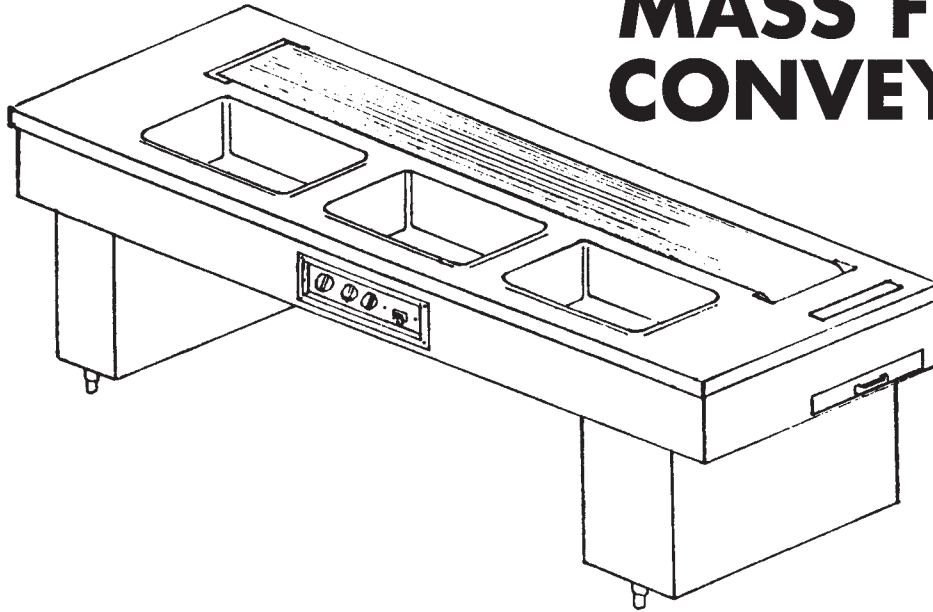


GATES
MANUFACTURING

6924 Smiley Avenue
St. Louis, Missouri, 63139
gatesmfg.com



GATES MFC MASS FEED CONVEYOR



Ideal for Banquet Operations,
Schools, Churches, anywhere fast set up is required.

*NOTE: Model specifications are subject to change
without notice.*

Conveyor shall be Gates Mass Feeding Series Model MFC and will carry U.L. Listed and NSF approved plate.

SIZE:

8' - 6" x 3' - 1" x 3' - 0" High

Conveyor shall be same construction as MFCX2 except will have three 12" x 20" dry/moist hot food wells and four 120V duplex receptacles. Two each end and two in pylons in center area under conveyor.

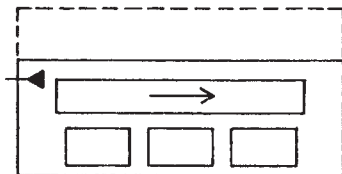
MECHANICAL DATA:

Three (3) 1200 watt hot food wells with infinite controls; Four (4) 120 volt receptacles; 1/2 H.P. Conveyor drive with on/off switch; entire unit wired to panel box. Ready for one conduit connection to power supply by others. Total load: 15.12 KW, 42.0 amps, 120-208/60/3.

OPTIONS:

- Cold Food or Frost Tops.
- Drains in Hot Food Wells.
- 5" diameter Casters in lieu of Legs.
- Cord set with appropriate size Plug.
- Matching Receptacles.
- Drop down work ledge on Belt Side.

ELECTRIC CONN.
8" ABOVE FLOOR



Shipped knocked down when possible.

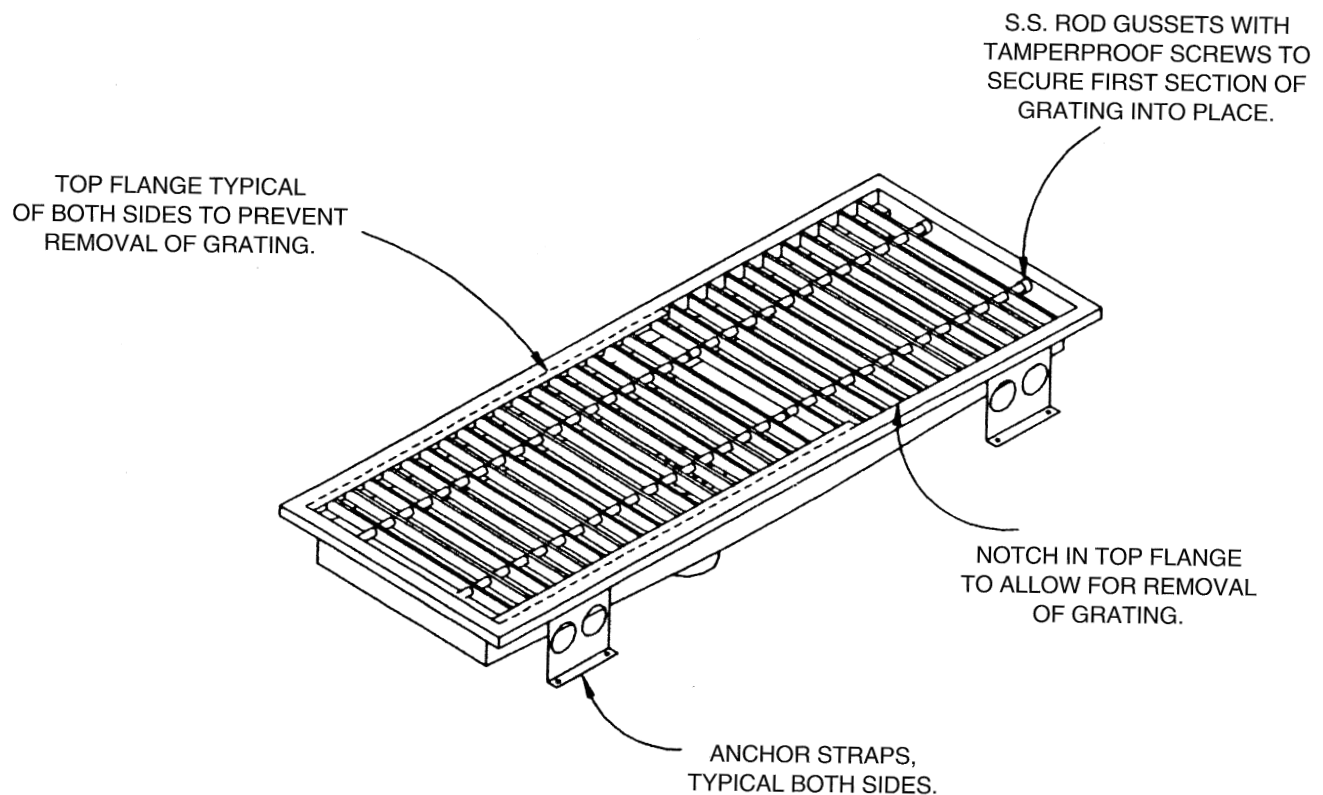


FLOOR TROUGH**PRISON PKG.****GATES STANDARD CORRECTIONAL PACKAGE****CORRECTIONAL GRADE CONSTRUCTION**

Floor trough shall have a top flange typical of both sides to prevent unauthorized removal of floor trough grating. Flange to be notched 1" shorter than first piece of grating, typical of both sides of trough. This allows for all grating to be removed at one location.

Floor trough to be fitted with stainless steel rod gussets with tamperproof screws at removal end to further prevent unauthorized removal.

Gates general construction as noted on prior spec sheets, applies to this model floor trough. Some floor trough models can not be used for prison application. Please contact the factory for information.



ITEM # _____

QUANTITY _____



GATES
MANUFACTURING

6924 Smiley Avenue
St. Louis, Missouri, 63139
gatesmfg.com

